

# LIFT

# MAEDAMC285 (2.82t x 1.4m)



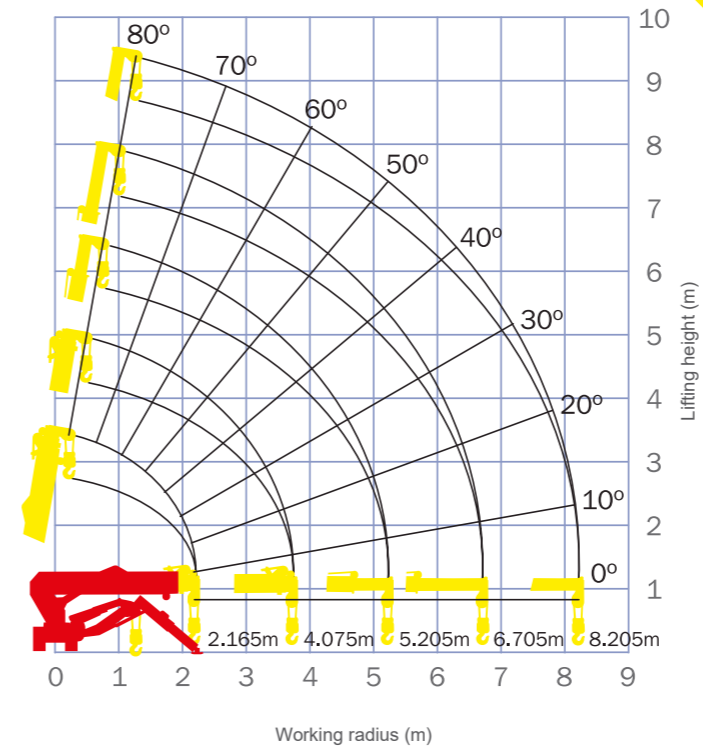
- 2.82 Ton Max capacity
- 8.7m Max Working Height
- Slim Body Width (750mm)
- Low Ground Pressure
- Programmable Moment Limiter
- Hydrostatic Transmission
- Tilt Sensor/Alarm
- Remote Control

## Crane Specifications

<b>Crane capacity</b>	capacity:	2.82 t x 1.4m
<b>Max working radius</b>	max:	8.205m x 150kg
<b>Max lifting height</b>	approx:	8.7m x 550kg
<b>Dimensions</b>	folded:	2715mm x 750mm x 1440mm
<b>Weight</b>	unladen:	1770kg
<b>Hook speed</b>	max:	8m / min. (4 falls, 3rd layer)
<b>Single Line Speed</b>	max:	32m / min. (3rd layer)
<b>Hoist Rope</b>	Type:	IWRC 6 x Fi (29) Ø 7mm x 48m
<b>Telescopic System</b>	Boom length:	2.535m - 8.575m
	Telescoping speed:	6.04m / 22 sec
	Boom type:	Fully automatic 5 section pentagonal telescopic
<b>Boom Hoist System</b>	Hoist angle / speed:	0° - 80° / 14 sec
<b>Slew System</b>	Slew angle / speed:	360° continuous / 1.0 rpm
<b>Outrigger System</b>	Type:	4 Multi position box type. Hydraulic cylinders
	Maximum extended dimensions	(L) 4580mm x (Fro) 4530mm x (Rear) 3810mm
<b>Traction System</b>	Drive:	Hydrostatic type, stepless forward and reverse
	Travel speed:	0 - 2.2 km/h
	Gradability:	20°
	Ground length x width:	975mm x 200mm (Track dimensions)
	Ground pressure:	0.45 kgf / cm <sup>2</sup>
<b>Engine</b>	Type:	2 cylinder water cooled diesel
	Fuel tank capacity:	Diesel / 12L
<b>Standard Equipment</b>	Working light, hour-meter, 4-fall hook block, black rubber tracks, moment limiter, hydraulic safety valves, level, wire rope latch, machine body inclination alarm, EMO switch, working status lamp, overwind protection and cable remote control.	
<b>Optional Equipment</b>	White rubber tracks, single fall hook, two fall hook, searcher hook and radio remote control.	



## Working Range



### First Stage

#### FIRST STAGE EXTENDED 2.53m/4.075m BOOM LENGTH

Working radius m	<1.4	1.5	2	2.5	3	3.5	3.7
Outrigger Max kg	2820	2520	1920	1570	1220	970	920

### Second Stage

#### SECOND STAGE EXTENDED 5.575m BOOM LENGTH

Working radius m	<3	3.5	4	4.5	5	5.2
Outrigger Max kg	1220	970	780	630	530	530

### Third Stage

#### THIRD STAGE EXTENDED 7.075m BOOM LENGTH

Working radius m	<3.6	4	4.5	5	5.5	6	6.5	6.7
Outrigger Max kg	820	740	580	480	430	380	350	330

### Fourth Stage

#### FOURTH STAGE EXTENDED 8.575m BOOM LENGTH

Working radius m	<4	4.5	5	5.5	6	6.5	7	7.5	8	8.2
Outrigger Max kg	550	400	340	300	270	230	200	180	150	150

## Dimensions

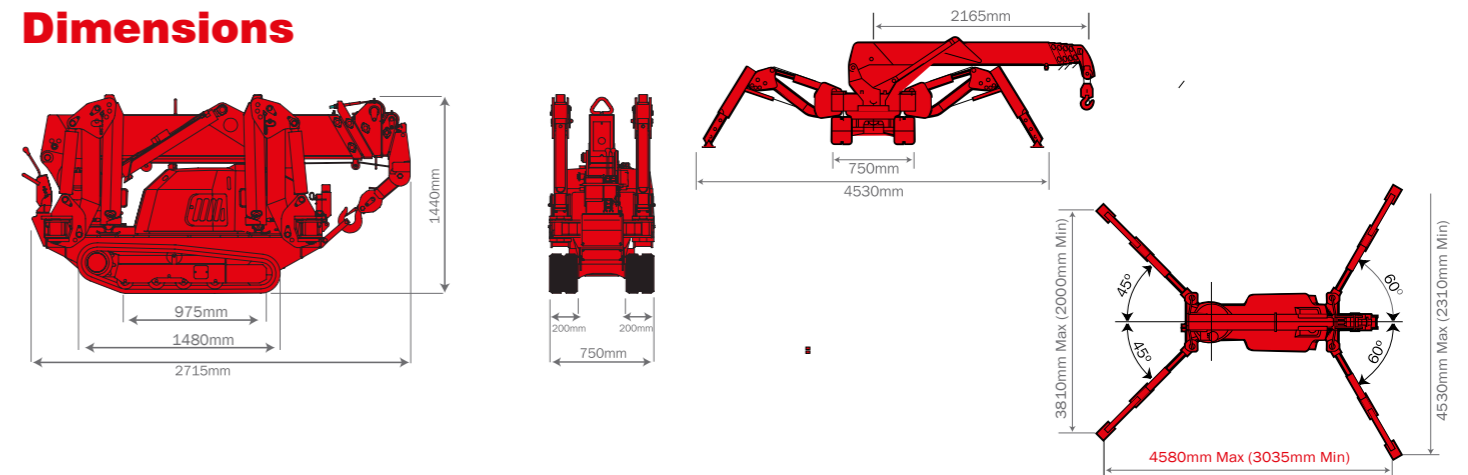


Diagram shows outriggers at maximum position

